

CONSOLIDATION

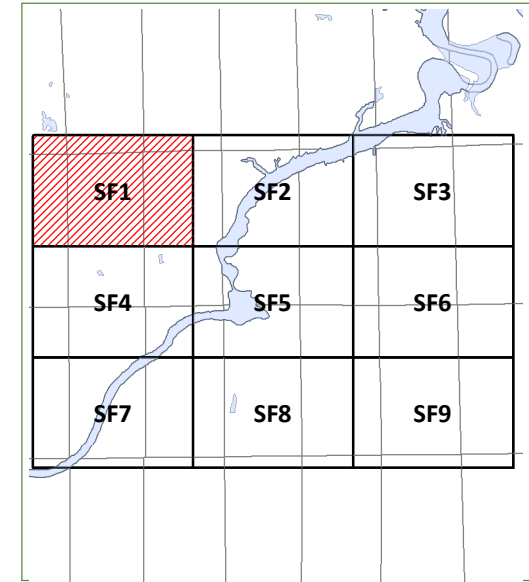
JUNE 1, 2018



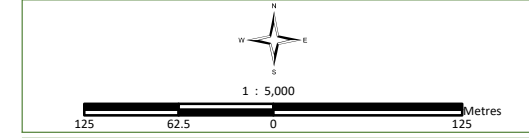
West Nipissing Ouest

Joie de vivre



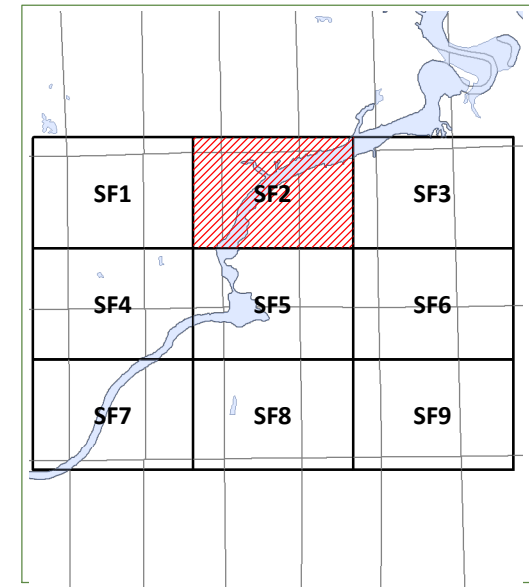
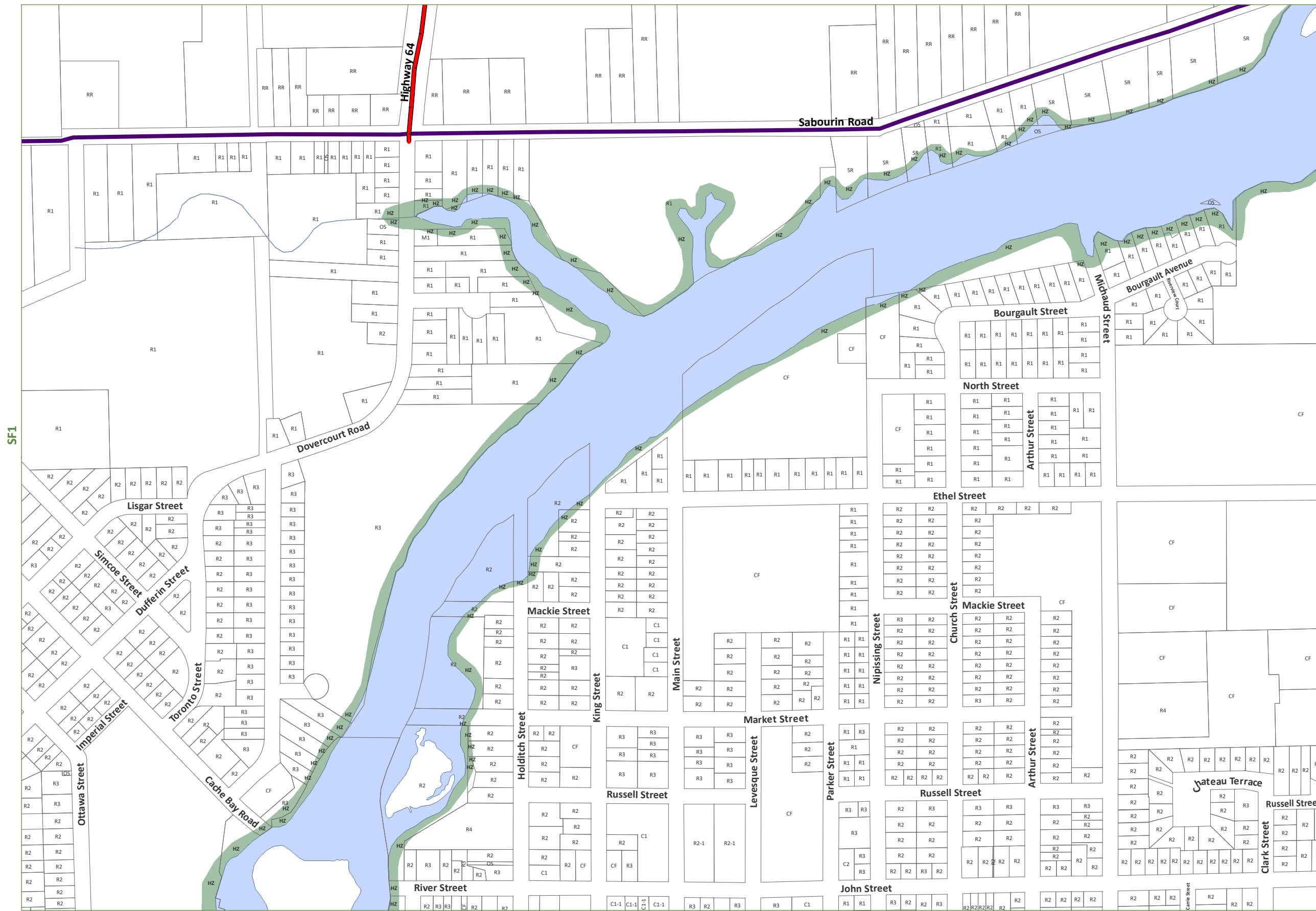


A1	Agriculture One	RU	Rural
A2	Agriculture Two	R2	Residential Two
R1	Residential One	R4	Residential Four
R3	Residential Three	SR	Shoreline Residential
RR	Rural Residential	MHR	Mobile Home Residential
C1	General Commercial	C2	Highway Commercial
C3	Tourist Commercial	M2	Heavy Industrial
M1	Light Industrial	WDI	Waste Disposal Industrial
M3	Extractive Industrial	OS	Open Space
CL	Crown Land	CF	Community Facility
PSW	Provincially Significant Wetland		
HZ	Hazard Lands		
WMA	Waste Management Influence Area		
SA	Settlement Areas		
FMB	Former Municipal Boundaries		
Hwy	Highways	PR	Private Roads
TR	Township Roads	RR	Resource Roads
P	Pipeline	RL	Rail Lines

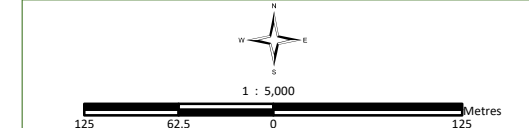


This map is for illustration purposes only. The information displayed on this map has been created from Ministry of Natural Resources, Ontario Base Mapping & MPAC Property Fabrics. While every effort has been made to accurately depict the information, this map should not be relied on as a precise indicator of locations of features or roads.

Base Mapping Source:  
Ministry of Natural Resources - Ontario Base Mapping  
MPAC - Municipal Property Assessment Corporation

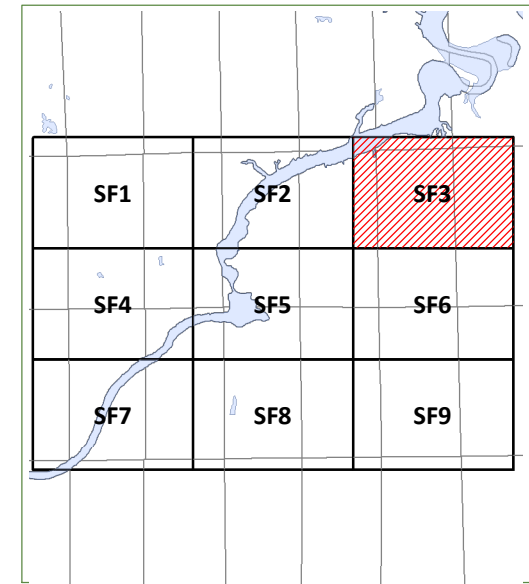
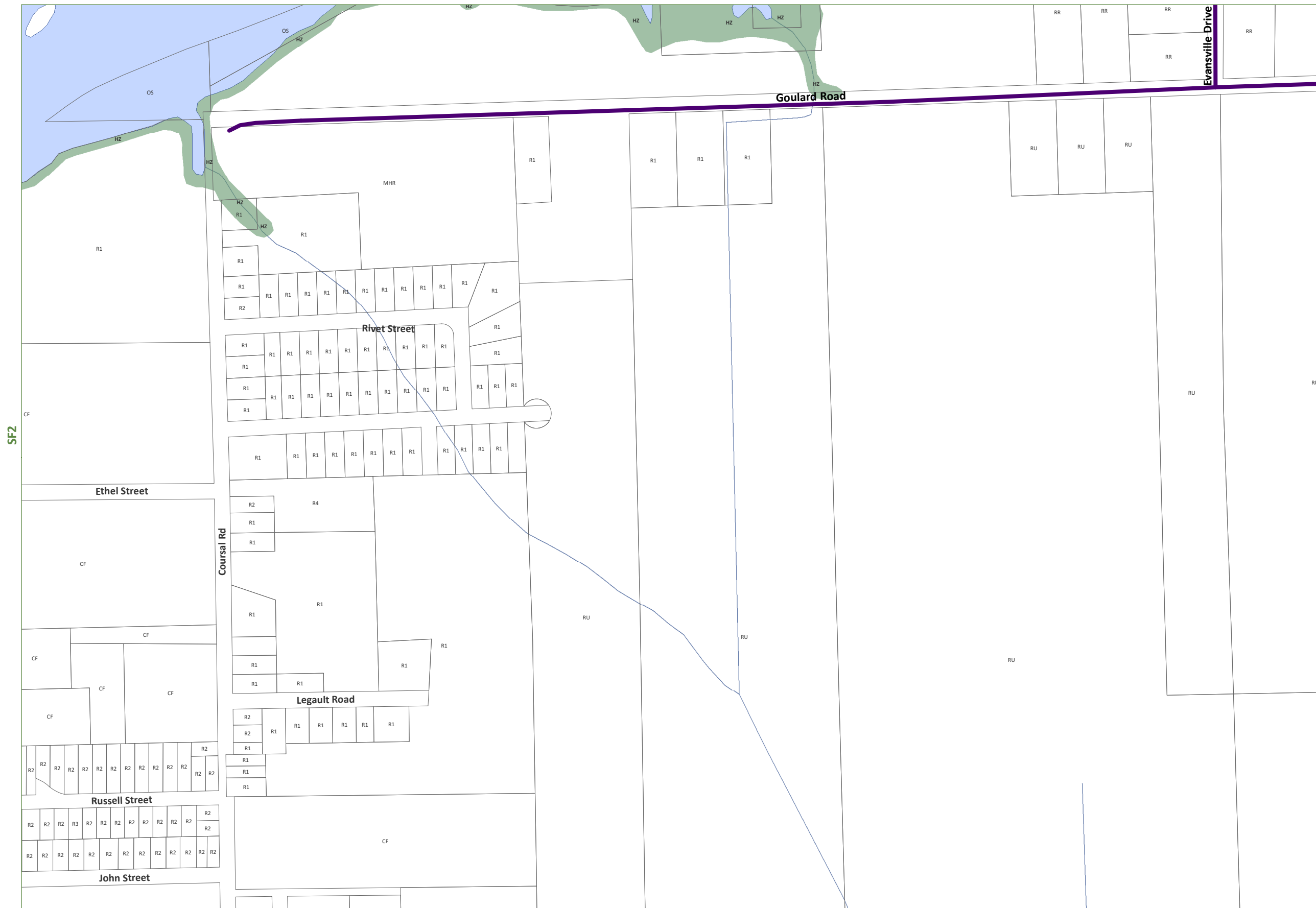


A1	Agriculture One	RU	Rural
A2	Agriculture Two		
R1	Residential One	R2	Residential Two
R3	Residential Three	R4	Residential Four
SR	Shoreline Residential		
RR	Rural Residential		
MHR	Mobile Home Residential		
C1	General Commercial	C2	Highway Commercial
C3	Tourist Commercial		
M1	Light Industrial	M2	Heavy Industrial
M3	Extractive Industrial		Waste Disposal Industrial
CL	Crown Land	OS	Open Space
CF	Community Facility		
PSW	Provincially Significant Wetland		
	HZ	Hazard Lands	
		Waste Management Influence Area	
		Settlement Areas	
		Former Municipal Boundaries	
		Highways	Private Roads
		Township Roads	Resource Roads
		Pipeline	Rail Lines



This map is for illustration purposes only. The information displayed on this map has been created from Ministry of Natural Resources, Ontario Base Mapping & MPAC Property Fabrics. While every effort has been made to accurately depict the information, this map should not be relied on as a precise indicator of locations of features or roads.

Base Mapping Source:  
Ministry of Natural Resources - Ontario Base Mapping  
MPAC - Municipal Property Assessment Corporation



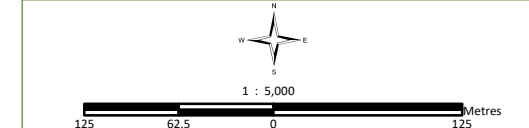
A1	Agriculture One	RU	Rural
A2	Agriculture Two		
R1	Residential One	R2	Residential Two
R3	Residential Three	R4	Residential Four
SR	Shoreline Residential		
RR	Rural Residential		
MHR	Mobile Home Residential		
C1	General Commercial	C2	Highway Commercial
C3	Tourist Commercial		
M1	Light Industrial	M2	Heavy Industrial
M3	Extractive Industrial		Waste Disposal Industrial
CL	Crown Land	OS	Open Space
CF	Community Facility		
PSW	Provincially Significant Wetland		

HZ	Hazard Lands
	Waste Management Influence Area
	Settlement Areas
	Former Municipal Boundaries

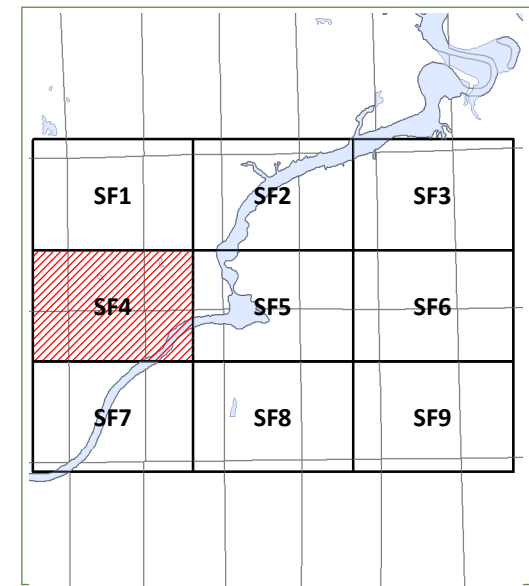
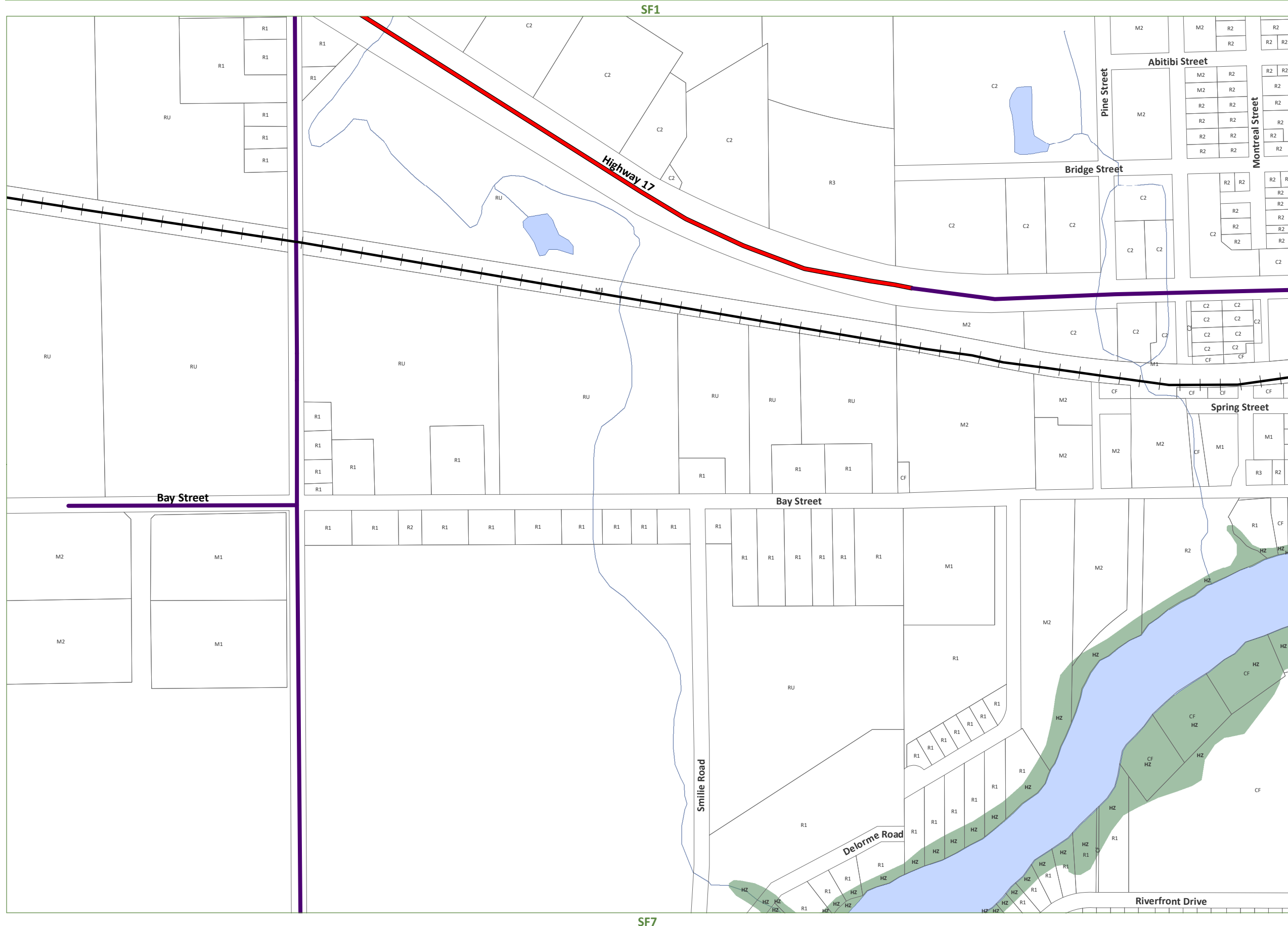
  

	Highways		Private Roads
	Township Roads		Resource Roads
	Pipeline		Rail Lines

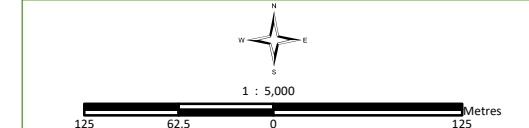


This map is for illustration purposes only. The information displayed on this map has been created from Ministry of Natural Resources, Ontario Base Mapping & MPAC Property Fabrics. While every effort has been made to accurately depict the information, this map should not be relied on as a precise indicator of locations of features or roads.

Base Mapping Source:  
Ministry of Natural Resources - Ontario Base Mapping  
MPAC - Municipal Property Assessment Corporation

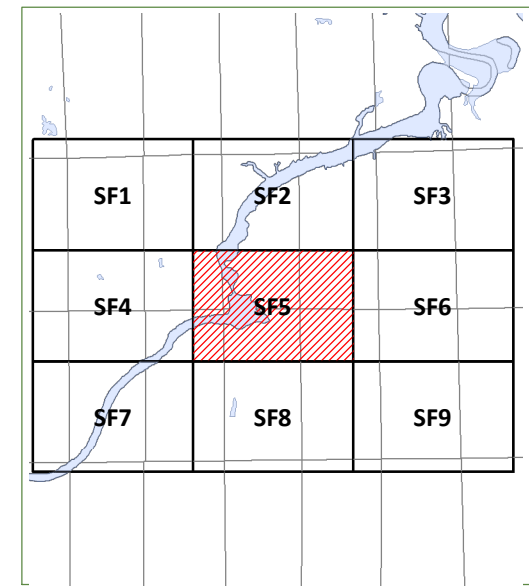
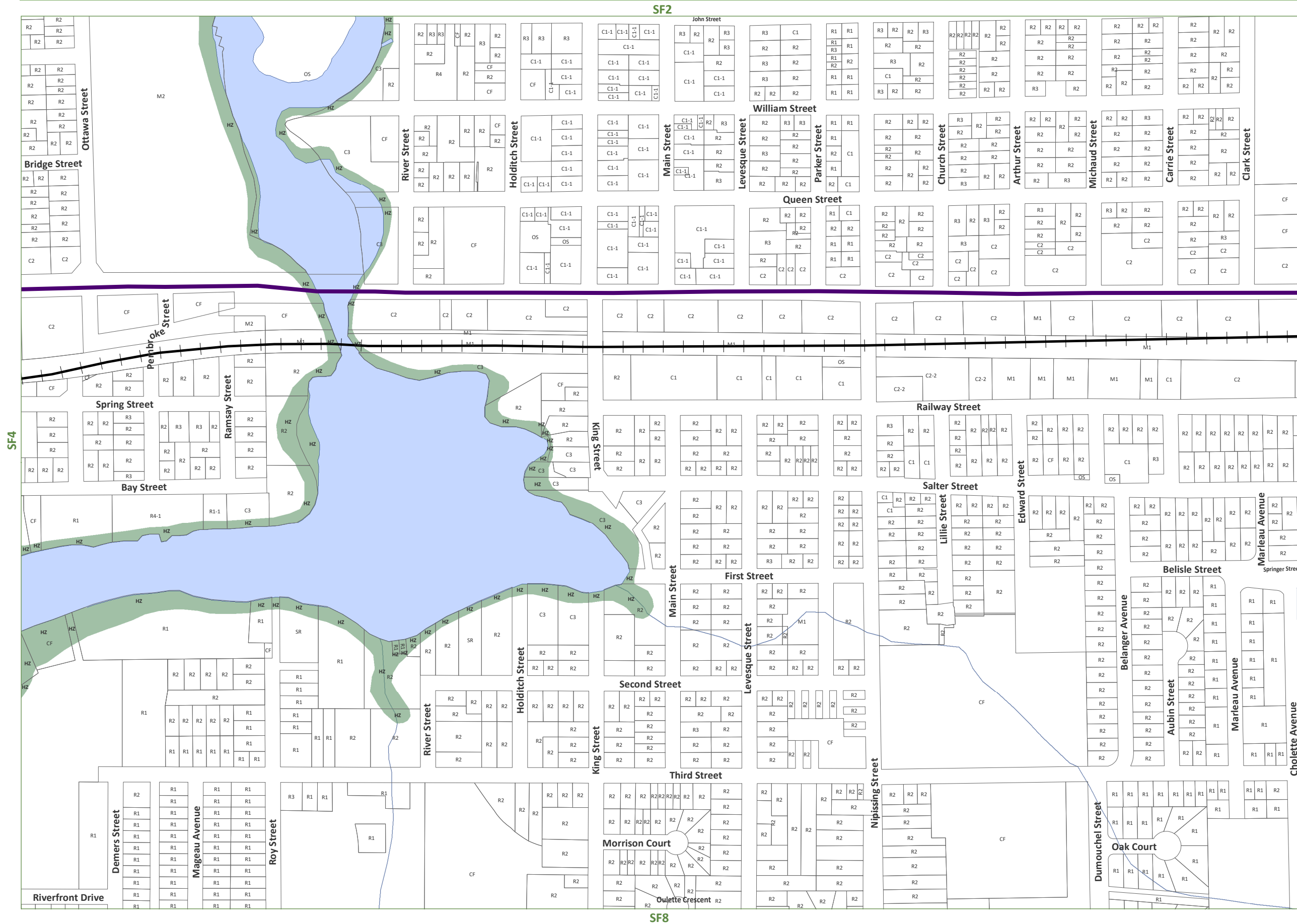


A1	Agriculture One	RU	Rural
A2	Agriculture Two		
R1	Residential One	R2	Residential Two
R3	Residential Three	R4	Residential Four
SR	Shoreline Residential		
RR	Rural Residential		
MHR	Mobile Home Residential		
C1	General Commercial	C2	Highway Commercial
C3	Tourist Commercial		
M1	Light Industrial	M2	Heavy Industrial
M3	Extractive Industrial		Waste Disposal Industrial
CL	Crown Land	OS	Open Space
CF	Community Facility		
PSW	Provincially Significant Wetland		
	HZ		Hazard Lands
			Waste Management Influence Area
			Settlement Areas
			Former Municipal Boundaries
			Highways
			Township Roads
			Pipeline
			Private Roads
			Resource Roads
			Rail Lines



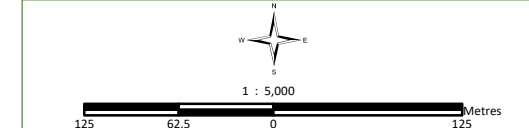
This map is for illustration purposes only. The information displayed on this map has been created from Ministry of Natural Resources, Ontario Base Mapping & MPAC Property Fabrics. While every effort has been made to accurately depict the information, this map should not be relied on as a precise indicator of locations of features or roads.

Base Mapping Source:  
Ministry of Natural Resources - Ontario Base Mapping  
MPAC - Municipal Property Assessment Corporation



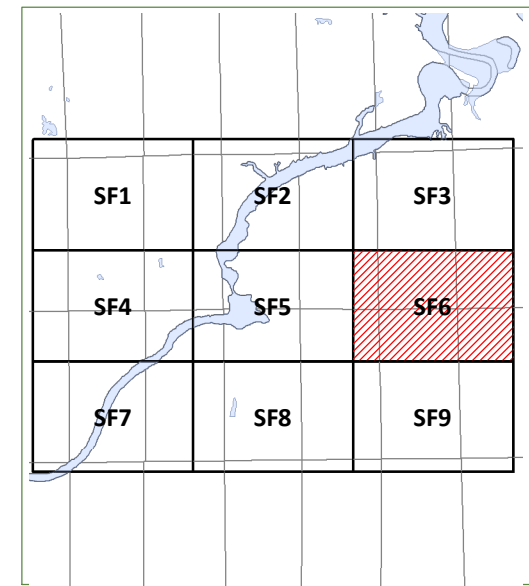
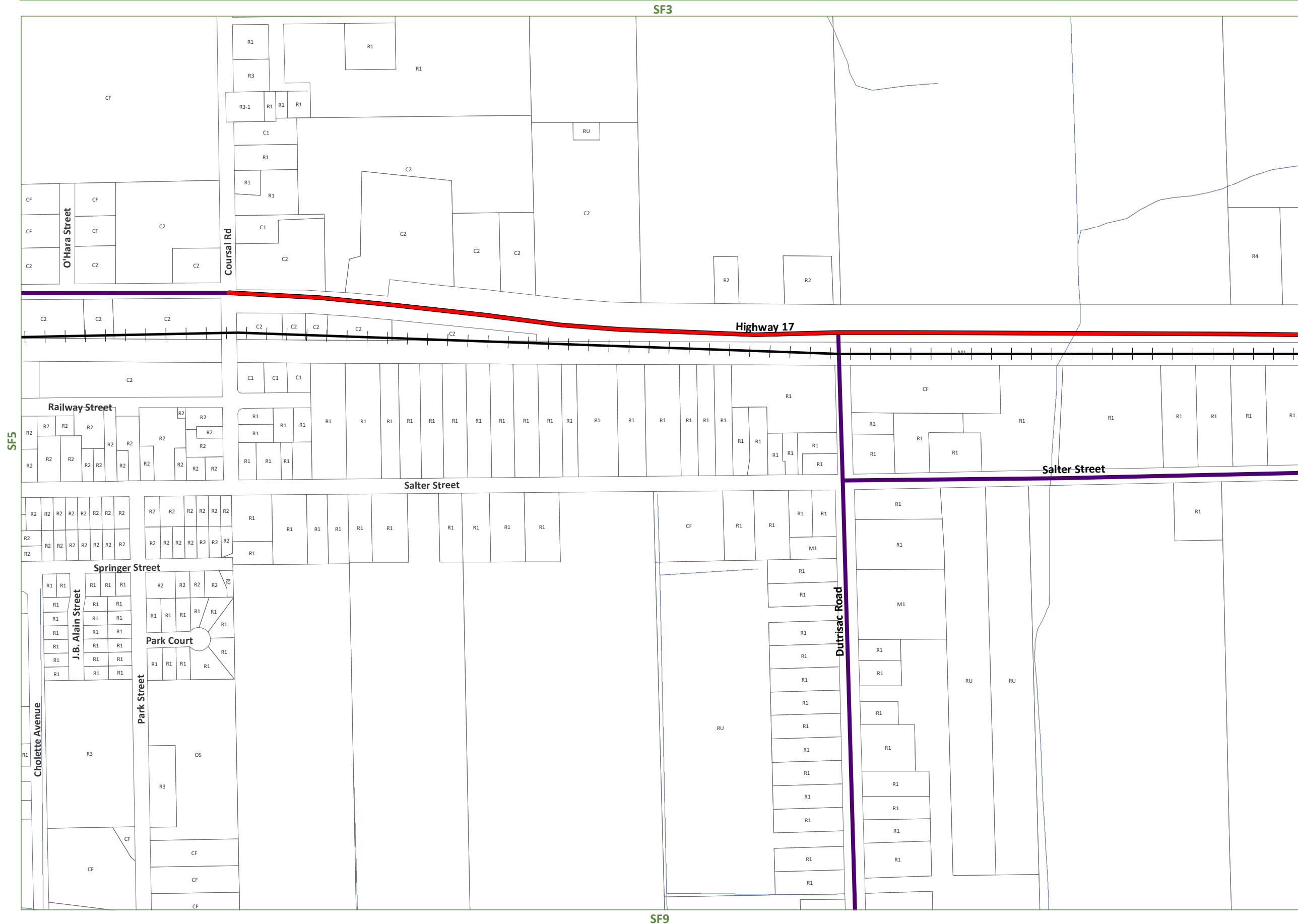
A1	Agriculture One	RU	Rural
A2	Agriculture Two		
R1	Residential One	R2	Residential Two
R3	Residential Three	R4	Residential Four
SR	Shoreline Residential		
RR	Rural Residential		
MHR	Mobile Home Residential		
C1	General Commercial	C2	Highway Commercial
C3	Tourist Commercial		
M1	Light Industrial	M2	Heavy Industrial
M3	Extractive Industrial		Waste Disposal Industrial
CL	Crown Land	OS	Open Space
CF	Community Facility		
PSW	Provincially Significant Wetland		

- HZ Hazard Lands
- Waste Management Influence Area
- Settlement Areas
- Former Municipal Boundaries
- Highways
- Township Roads
- Private Roads
- Resource Roads
- Pipeline
- Rail Lines



This map is for illustration purposes only. The information displayed on this map has been created from Ministry of Natural Resources, Ontario Base Mapping & MPAC Property Fabrics. While every effort has been made to accurately depict the information, this map should not be relied on as a precise indicator of locations of features or roads.

Base Mapping Source:  
Ministry of Natural Resources - Ontario Base Mapping  
MPAC - Municipal Property Assessment Corporation



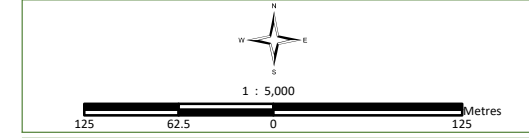
A1	Agriculture One	RU	Rural
A2	Agriculture Two	R2	Residential Two
R1	Residential One	R4	Residential Four
R3	Residential Three		
SR	Shoreline Residential		
RR	Rural Residential		
MHR	Mobile Home Residential		
C1	General Commercial	C2	Highway Commercial
C3	Tourist Commercial		
M1	Light Industrial	M2	Heavy Industrial
M3	Extractive Industrial		Waste Disposal Industrial
CL	Crown Land	OS	Open Space
CF	Community Facility		
PSW	Provincially Significant Wetland		

HZ	Hazard Lands
WMIA	Waste Management Influence Area
SA	Settlement Areas
FMB	Former Municipal Boundaries

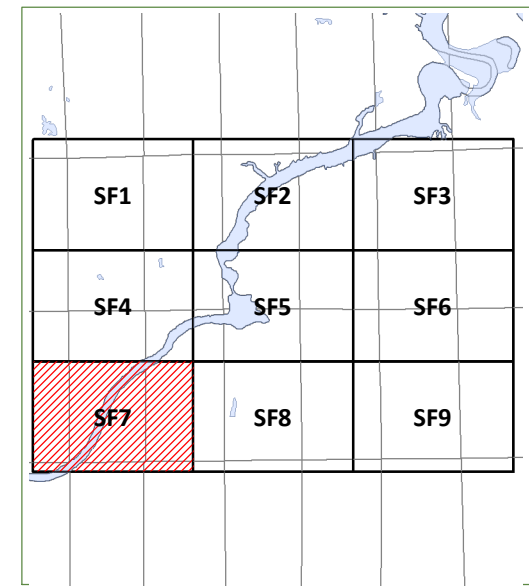
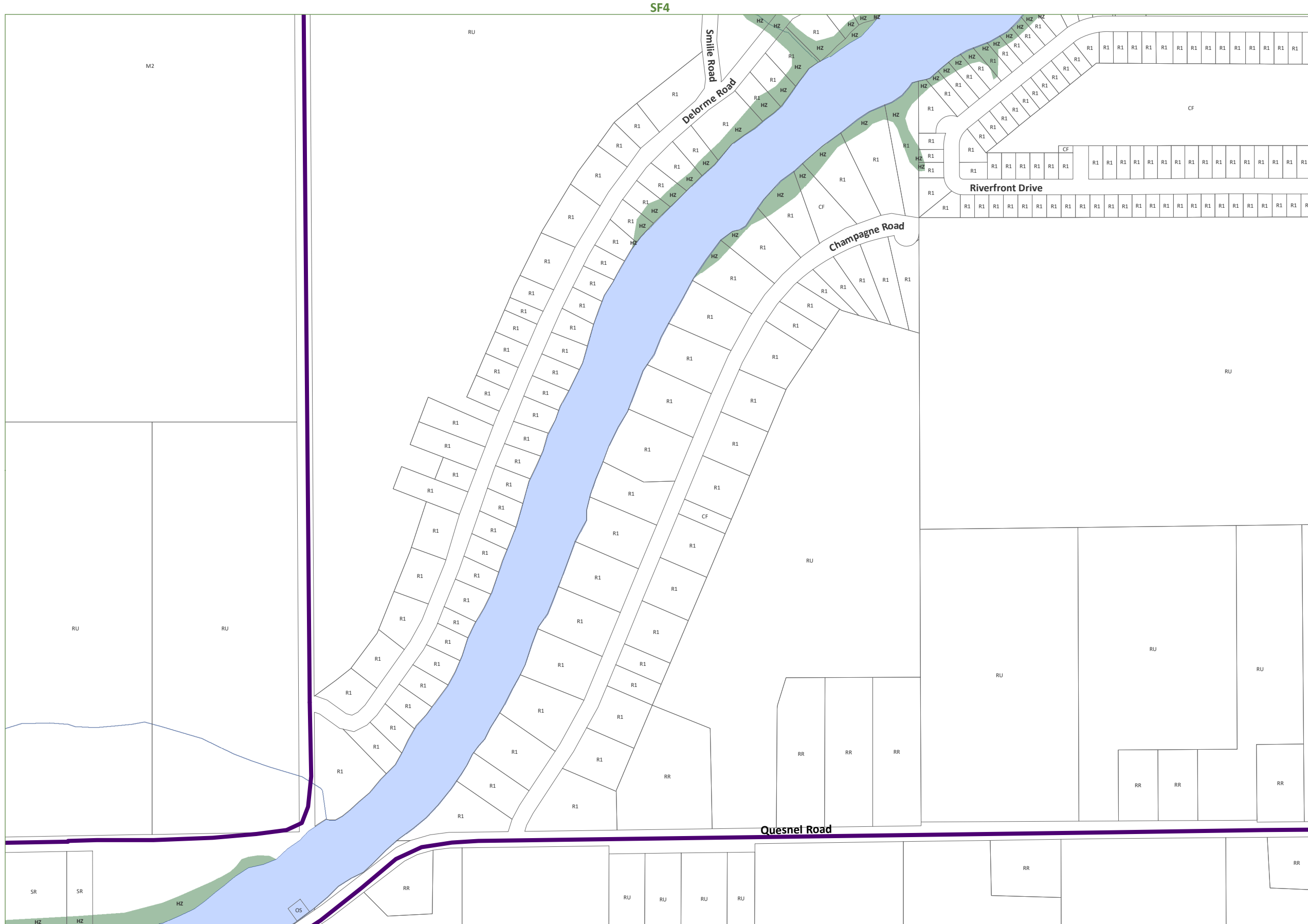
Highways	Private Roads
Township Roads	Resource Roads
Pipeline	Rail Lines



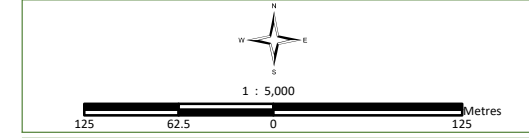
This map is for illustration purposes only. The information displayed on this map has been created from Ministry of Natural Resources, Ontario Base Mapping & MPAC Property Fabrics. While every effort has been made to accurately depict the information, this map should not be relied on as a precise indicator of locations of features or roads.

Base Mapping Source:  
Ministry of Natural Resources - Ontario Base Mapping  
MPAC - Municipal Property Assessment Corporation



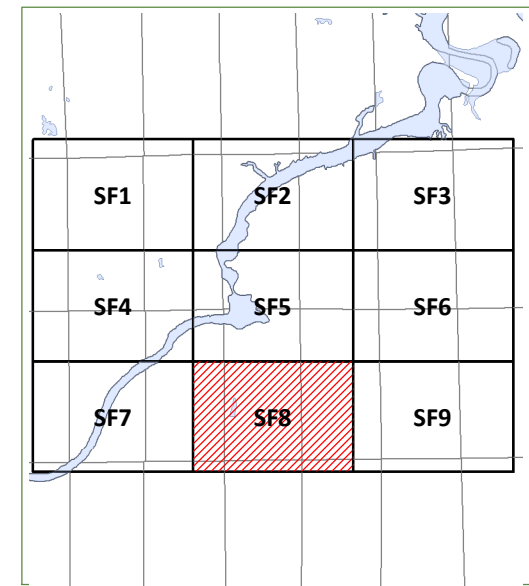
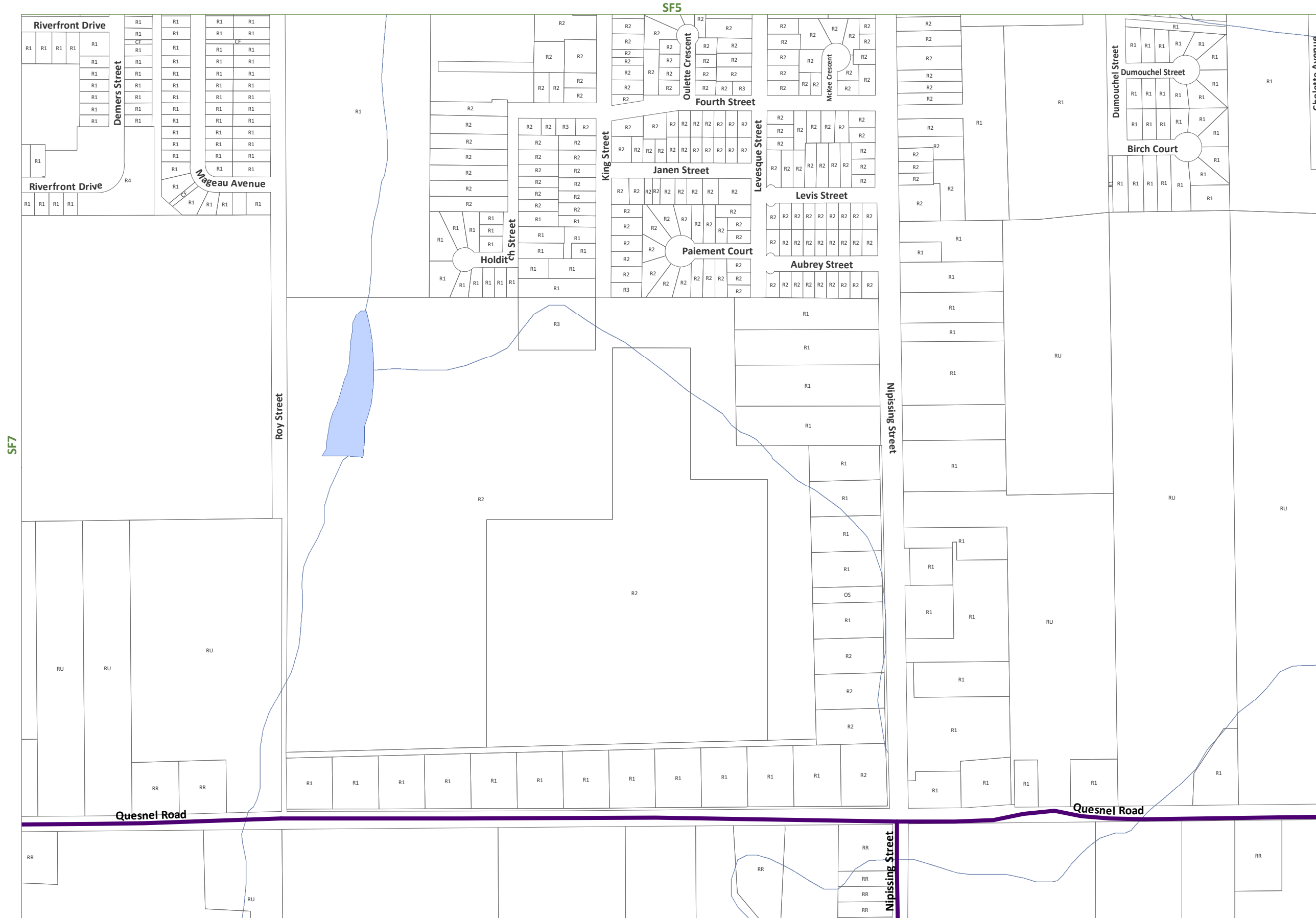


A1	Agriculture One	RU	Rural
A2	Agriculture Two		
R1	Residential One	R2	Residential Two
R3	Residential Three	R4	Residential Four
SR	Shoreline Residential		
RR	Rural Residential		
MHR	Mobile Home Residential		
C1	General Commercial	C2	Highway Commercial
C3	Tourist Commercial		
M1	Light Industrial	M2	Heavy Industrial
M3	Extractive Industrial		Waste Disposal Industrial
CL	Crown Land	OS	Open Space
CF	Community Facility		
PSW	Provincially Significant Wetland		
	HZ		Hazard Lands
			Waste Management Influence Area
			Settlement Areas
			Former Municipal Boundaries
			Highways
			Township Roads
			Private Roads
			Resource Roads
			Pipeline
			Rail Lines

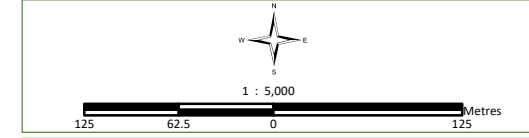


This map is for illustration purposes only. The information displayed on this map has been created from Ministry of Natural Resources, Ontario Base Mapping & MPAC Property Fabrics. While every effort has been made to accurately depict the information, this map should not be relied on as a precise indicator of locations of features or roads.

Base Mapping Source:  
Ministry of Natural Resources - Ontario Base Mapping  
MPAC - Municipal Property Assessment Corporation

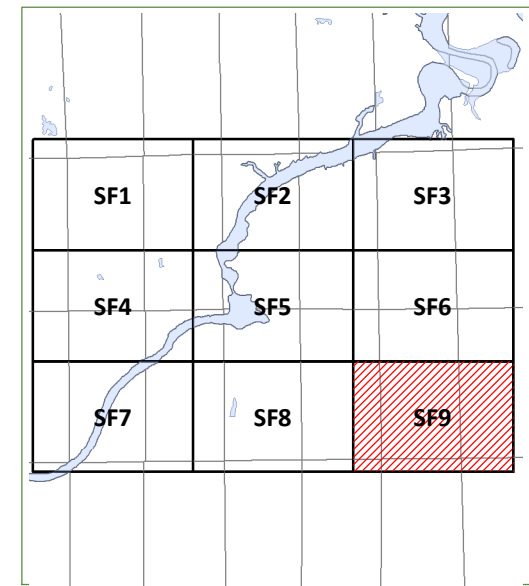


A1	Agriculture One	RU	Rural
A2	Agriculture Two		
R1	Residential One	R2	Residential Two
R3	Residential Three	R4	Residential Four
SR	Shoreline Residential		
RR	Rural Residential		
MHR	Mobile Home Residential		
C1	General Commercial	C2	Highway Commercial
C3	Tourist Commercial		
M1	Light Industrial	M2	Heavy Industrial
M3	Extractive Industrial		Waste Disposal Industrial
CL	Crown Land	OS	Open Space
CF	Community Facility		
PSW	Provincially Significant Wetland		
	HZ	Hazard Lands	
		Waste Management Influence Area	
		Settlement Areas	
		Former Municipal Boundaries	
	Highways	Private Roads	
	Township Roads	Resource Roads	
	Pipeline	Rail Lines	



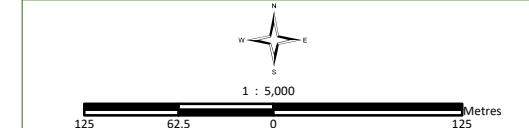
This map is for illustration purposes only. The information displayed on this map has been created from Ministry of Natural Resources, Ontario Base Mapping & MPAC Property Fabrics. While every effort has been made to accurately depict the information, this map should not be relied on as a precise indicator of locations of features or roads.

Base Mapping Source:  
Ministry of Natural Resources - Ontario Base Mapping  
MPAC - Municipal Property Assessment Corporation



A1	Agriculture One	RU	Rural
A2	Agriculture Two	R2	Residential Two
R1	Residential One	R4	Residential Four
R3	Residential Three		
SR	Shoreline Residential		
RR	Rural Residential		
MHR	Mobile Home Residential		
C1	General Commercial	C2	Highway Commercial
C3	Tourist Commercial		
M1	Light Industrial	M2	Heavy Industrial
M3	Extractive Industrial		Waste Disposal Industrial
CL	Crown Land	OS	Open Space
CF	Community Facility		
PSW	Provincially Significant Wetland		

HZ	Hazard Lands
WMIA	Waste Management Influence Area
SA	Settlement Areas
FB	Former Municipal Boundaries
Highways	Private Roads
Township Roads	Resource Roads
Pipeline	Rail Lines



This map is for illustration purposes only. The information displayed on this map has been created from Ministry of Natural Resources, Ontario Base Mapping & MPAC Property Fabrics. While every effort has been made to accurately depict the information, this map should not be relied on as a precise indicator of locations of features or roads.

Base Mapping Source:  
Ministry of Natural Resources - Ontario Base Mapping  
MPAC - Municipal Property Assessment Corporation